



To : Mr. Oliver M. Filoteo
President / Chief Executive Officer
From : Quality Control Department
Re : Window type air-conditioner
Date : January 27, 2026
Reference no. : QCD-WAC-200GQAIINV32-26-01-001
Cc : PCO / A De Rivera / Dept. concern

Listed below are the specifications and parts of newly delivered Window type air-conditioner Quad Driven by AI Inverter with smart controller, received and inspected this January 22, to 24 2026.

KA-200GQAIINV32 (2.0hp)

Model : KA-200GQAIINV32
Description : Remote control window type inverter (QUAD AI SERIES) with Wifi
EAN Number : 4 806508 236615
P/O Number : KT-2509GR-18
Lot Number : 192225001
Serial number range : 19222509-10001 to 10390 (390 units)
Printing Features : Good and all labels are correct

Inspected units: **Kolin Serial number** 19222509 – 10179 and 10208
Supplier Serial no. 1309250000185 and 1309250000214



Remarks:

1. First shipment of the new QUAD AI Series 2.0 HP inverter window-type air conditioner.
2. Carton box color and features are same from approved designed.
3. The label is complying to the declared specification.
4. The CSPF / Energy label was sticked on face cover using own adhesive.
5. The Main PCB, Display PCB, and are different to sample unit.

See details on page 8.

Recommendations:

Units are automatically for 100%-line inspection and testing, also need to put QR code on to warranty card and serial number on power cord.

Note Inspected units are compared to Sample unit.

Packaging and Carton box checking:

Packaging Dimensions	W x D x H Gross weight	739 x 890 x 505 mm 56 kg.
Packaging Support	Top support : Bottom support :	Styrofoam / Thickness 27mm Styrofoam / Thickness : 50mm
Carton Box	W x D x H / Weight : Type / Thickness :	744 x 882 x 492 mm / 2.620g. Double wall, BC flute / 7.0mm
Carton base	W x D x H / Weight : Type / Thickness	721 x 874 x 90mm / 430g Single wall, B flute / 3.0mm
Accessories	<ol style="list-style-type: none"> 1. Owner's Manual 2. Smart Controller Manual 3. Warranty Card 4. Remote Control 5. AAA battery 6. Drain pan 7. Screw (2pcs) 	

Unit checking for outer part:

Specifications :	Phase	Single
	Voltage	230 V~
	Frequency	60 Hz
	Nominal Capacity	2.0hp
	Cooling Capacity	19,990 (5,997-21,989)kJ/h
		5.55(1.67-6,11)kW
	Power Input	1.430 (286-1,716) W
	Input Current	7.1 A
	Rated Power / Current	2,000 W / 8.7 A
	CSPF	5.59 ★★★★★
	Max Allowable Pressure	4.3 MPa
	Max Discharge Pressure	4.3 MPa
	Max Suction Pressure	2.5 MPa
	Sound Pressure Level	53/51/48 dB (A)
	Moisture Protection	IPX4
	Refrigerant / Charge	R32 / 0.63kg
BPS Certificate License No.	Product safety & Quality Q-2824	
Unit Dimensions	Width x Depth x Height	660 x 800 x 428mm
	Net weight	52 kg.

Shell Cabinet	Appearance	White color, powder coated metal. Air ventilation on both side and top.
	Dimensions W x D x H	660 x 765 x 427mm
	Back Logo (Dimensions)	KOLIN (190mm x 80mm) Green color Full DC Inverter (44mm x 11mm)
Face Cover	Appearance	White color, plastic materials. With KOLIN, QUAD AI, and INV. logo
	Dimensions (W x D x H)	655 x 65 x 427mm
	Swing louver (Horizontal) Swing louver (Vertical)	24 x 151mm /14pcs. / White (manual) 236 x 50 x 40mm / Black (motorize)
	Air intake panel (Dimensions): Front Kolin logo : Quad AI logo : Full DC Inverter logo:	450 x 30 x 425mm Cool gray color (size) 45 x 16mm Cool gray color (size) 50 x 22.5mm 37 x 9.5mm
	Air Filter (Appearance) : (Dimensions) :	White color 421mm x 362mm
Power cord	Color / Size : Specifications : Plug type :	Dirty White color / Length 1.5 meter SJT FT2 105°C / 300V / 3 x 14AWG 2.08mm ² / Wasung NEMA 6-15

Unit checking for inner part:

Compressor Motor	Brand name: Model Number: Specifications:	GREE FTz-SM151AXBD 260-350V / 900-7200rpm / R32/R410A / LRA-18
	Manufacturer: Appearance:	Zhuhai Landa Compressor Co. LTD Black coated Internal OLP
Fan Motor	Type: Part number: Model : Specifications: Manufacturer: Appearance :	Brushless DC motor 150104060147 ZW511A800059 / W1502-ZL DC310V/ 150W/ 10P / IP40 / Zhongshan Broad White Coated casing
Control Module	Main Board	300027064691 / W28E13DK GRJ28E-A10 (V1) T2.0 /14/ A
	Electrolytic Capacitor	680µf / 450V (3 pc.)
	Heat zinc	Dimensions (W x D x H) 155 x 76 x 60mm
	Control box	GI materials, with plastic base inside
	Remote Control (Type)	YAW1F9 / AAA battery 1.5V x 2
	WIFI Module (Model)	300145000145 / WB61AR
	Panel Display	300001061696 (D28EF13AQJ) GRJ28E-B1 (V1) 2024/05/15/14 T1.6

	Swing Motor	MP28ED / 12V / Step Motor (1pc.)
Unit Sensors	Temperature sensor: Tube sensor: Temperature Sensor Tube Sensor: Comp. Temp. sensor	GL 15K / 482mm (L) Evaporator Side GW 20K / 734mm (L) Evaporator Side GW 15K / 730mm (L) Condenser Side GW / 888mm (L) Condenser Side GL 50K / 685mm (L)
Evaporator	Aluminum fins : Copper tubing : Dimensions :	316pcs. Blue fins (Straight design) 3 rows of 60 lines of Ø 7.0mm (L x H x W)402 x 381 x 39mm Coated by Blue Resin paint
Condenser	Aluminum fins : Copper tubing : Dimensions :	669pcs. Blue fins (C curve design) 2 rows, 40 lines with Ø 5.0mm each (L x H x W) 841 x 400 x 24mm
Tubing system	Capillary tube (1pc.): Suction tube : High pressure tube : Strainer / Drier :	Ø 2.3mm x 1.097mm length Ø 12mm outside diameter Ø 9.0mm outside diameter none
Blower Wheel	Appearance: Dimensions :	Ivory color / ABS Plastic materials 70 leaves 6mm gap each Ø225mm x 110mm
Propeller Fan	Appearance: Dimensions :	Ivory color / ABS Plastic materials / 5 Blades Ø396mm x 143mm
Other Parts	Unit Base:	White coated metal materials
	Top cover / Divider:	Evaporator side - GI materials Condenser side - Plastic materials
	Fan Motor Bracket:	Plastic materials, built-in to divider and mounted on base.

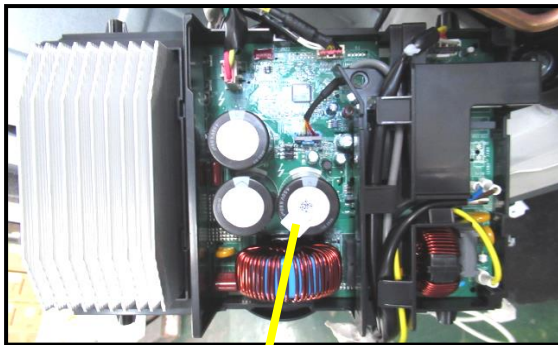
Unit Inner Part Photo's and Spec's.

	 <p>GREE FTz-SM151AXBD 260-350V --- 900-7200rpm R32/R410A LDDE70aB1301651 ZHUHAI LANDA COMPRESSOR CO., LTD. No. 1, Longshan ave., Doumen District, Zhuhai, Guangdong, China △Refrigerant is as per the applied product label CE 1155 TS/C: -27/115 PS/bar: 22/44</p>	<p>COMPRESSOR</p> <p>GREE FTz-SM151AXBD 260-350V / 900-7200rpm / R32/R410A / LRA-18</p>
---	--	--



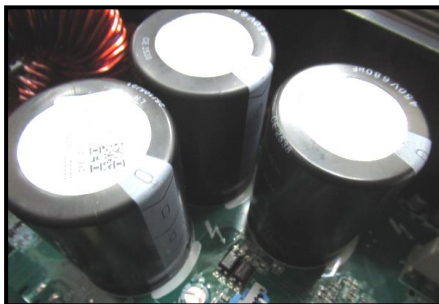
FAN MOTOR

Brushless DC motor
150104060147
ZW511A800059 / W1502-ZL
DC310V/ 150W/ 10P / IP40 /



MAIN BOARD

300027064691 / W28E13DK
GRJ28E-A10 (V1) T2.0 /14/ A



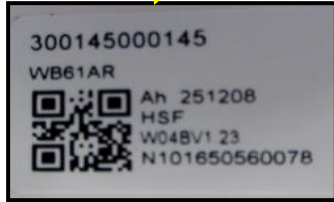
ELECTROLYTIC CAPACITOR

680μf / 450V (3 pc.)



DISPLAY BOARD

300001061696 (D28EF13AQJ)
GRJ28E-B1 (V1) 2024/05/15/14 T1.6



WIFI MODULE

300145000145 / WB61AR



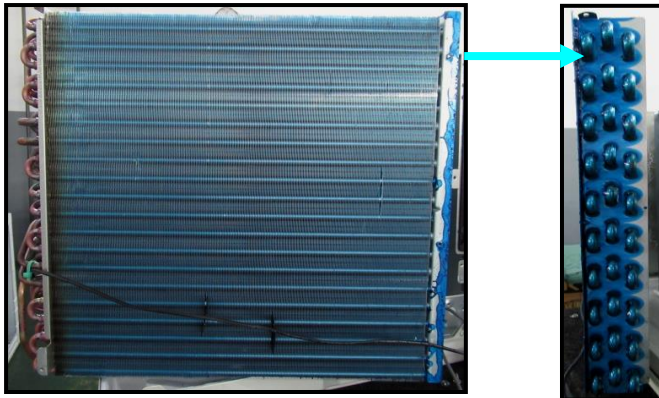
SWING MOTOR

MP28ED / 12V / Step Motor (1pc.)



REMOTE CONTROL

YAW1F9 / AAA battery 1.5V x 2



EVAPORATOR

Blue fins (Straight design)
3 rows of 60 lines of Ø 7.0mm
(L x H x W)402 x 381 x 39mm

**The long U bend side was coated
by Blue Resin Paint**



CONDENSER

Blue fins (C curve design)
2 rows, 40 lines with Ø 5.0mm each
(L x H x W) 841 x 400 x 24mm



BLOWER WHEEL

Ivory color / ABS Plastic materials
70 leaves 6mm gap each
Ø225mm x 110mm



PROPELLER FAN





Ivory color / ABS Plastic materials / 5
Blades Ø396mm x 143mm



ACCESSORIES

Owner/s Manual
Smart Controller Manual
Warranty Card
Remote Control
AAA battery
Screw (2pcs)
Drain Pan

COMPARISON OF KA-200GQAIINV32 to 2.0HP SAMPLE UNIT

PARTS	KA-200GQAIINV32	2.0HP SAMPLE UNIT	REMARKS
COMPRESSOR	GREE FTz-SM1511AXBD 260-350V / 900-7200rpm / R32/R410A / LRA-18	GREE FTZ-SM151AXBD 260-350V / 900-7200rpm / R32/R410A LRA-18	SAME
FAN MOTOR	Brushless DC motor 150104060147 ZW511A800059 / W1502-ZL DC310V/ 150W/ 10P / IP40	Brushless DC motor 150104060147 ZW511A800059 / CJ150Z-ZL DC310V / 150W / 10P / IP40	SAME
MAIN BOARD	300027064691 /W28E13DK GRJ28E-A10 (V1) T2.0 /14/ A 	300027062571 / W28E13AXJ GRJ28E-A10 (V 1) T2.0 / 14 / A 	DIFFERENT
DISPLAY BOARD	300001061696 (D28EF13AQJ) GRJ28E-B1 (V1) 2024/05/15/14 T1.6 	300001061255 / D28EF13ABJ GRJ28E-B1 (V1) 2024/5/15/14 T1.6 	DIFFERENT
WIFI MODULE	WB61AR / 300145000144	NONE	
REMOTE CONTROL	YAW1F9 / AAA battery 1.5V x 2	YAWIF9 / AAA battery / 1.5Vx2	SAME
BLOWER WHEEL	Ivory color / ABS Plastic materials 70 leaves Ø225mm x 110mm	Ivory color /ABS Plastic materials 70 leaves Ø225mm x 110mm	SAME

PROPELLER FAN	Ivory color / ABS Plastic materials / 5 Blades Ø396mm x 143mm	Ivory color / ABS Plastic 5 Blades Ø396mm x 145mm	SAME
EVAPORATOR	Blue fins (Straight design) 3 rows of 60 lines of Ø 7.0mm (L x H x W)402 x 381 x 39mm	Blue fins (Straight design) 3 rows of 60 lines of Ø 7.0mm (L x H x W) 402 x 381 x 38mm	SAME
CONDENSER	Blue fins (C curve design) 2 rows, 40 lines with Ø 5.0mm each (L x H x W) 841 x 400 x 24mm	Blue fins (C curve design) 2 rows, 40 lines with Ø 5.0mm each (L x H x W) 835 x 400 x 23mm	SAME

For your reference,

Prepared by : Jayson L. Pagacita
QC Staff

Noted by : Alberto I. Francisco
QC Asst. Supervisor

Approved by : Engr. Kenneth P. Zamora
Asst. Plant Operations Manager