



To : Mr. Oliver M. Filoteo  
President / Chief Executive Officer  
From : Quality Control Department  
Re : Window type air-conditioner  
Date : January 27, 2026  
Reference no. : QCD-WAC-75GQAIINV32-26-01-001  
Cc : PCO / A De Rivera / Dept. concern

Listed below are the specifications and parts of newly delivered Window type air-conditioner Quad Driven by AI Inverter with smart controller, received and inspected this January 19 to 24, 2026.

### KA-75GQAIINV32 (0.75hp)

**Model** : KA-75GQAIINV32  
**Description** : Remote control window type inverter (QUAD AI SERIES) with Wifi  
**EAN Number** : 4 806508 236585  
**P/O Number** : KT-2509GR-18  
**Lot Number** : 191925001  
**Serial number range** : 19192509-10001 to 10986 (986 units)  
**Printing Features** : Good and all labels are correct

**Inspected units:** **Kolin Serial number** 19192509 – 10121 and 10390  
**Supplier Serial no.** 1305450000127 and 1305450000396



### Remarks:

1. First shipment of the new QUAD AI Series 0.75 HP inverter window-type air conditioner.
2. Carton box color and features are same from approved designed.
3. The label is complying to the declared specification.
4. The CSPF / Energy label was sticked on face cover using own adhesive.
5. The Main PCB, Display PCB, and remote control are different to sample unit.

**See details on page 9.**

## Recommendations:

Units are automatically for 100%-line inspection and testing, also need to put QR code on to warranty card and serial number on power cord.

**Note:** Inspected units are compared to the Sample unit.

**MAIN BOARD is the only difference of 0.75hp on 1.0hp QUAD AI.**

## Packaging and Carton box checking:

<b>Packaging Dimensions</b>	W x D x H Gross weight	516 x 743 x 374 mm 31.5 kg.
<b>Packaging Support</b>	Top support : Bottom support :	Carton board / Single wall / Thickness 2.0mm Styrofoam / Thickness : 30mm
<b>Carton Box</b>	W x D x H / Weight : Type / Thickness :	516 x 730 x 361 mm / 1.400g. Single wall, BE flute / 4.0mm
<b>Carton base</b>	W x D x H / Weight : Type / Thickness	502 x 728 x 71mm / 270g Single wall, B flute / 3.0mm
<b>Accessories</b>	<ol style="list-style-type: none"><li>1. Owner's Manual</li><li>2. Smart Controller Manual</li><li>3. Warranty Card</li><li>4. Remote Control</li><li>5. AAA battery</li><li>6. Drain pan</li><li>7. Screw (2pcs)</li></ol>	

## Unit checking for outer part:

<b>Specifications :</b>	Phase	Single
	Voltage	230 V~
	Frequency	60 Hz
	Nominal Capacity	0.75hp
	Cooling Capacity	8,900 (2,697-9,889) kJ/h
		2.50(0.75-2.75) kW
	Power Input	600 (120-720) W
	Input Current	3.23 A
	Rated Power / Current	1,020 W / 4.5 A
	CSPF	5.51 ★★★★★
	Max Allowable Pressure	4.3 MPa
	Max Discharge Pressure	4.3 MPa
	Max Suction Pressure	2.5 MPa
	Sound Pressure Level	49/45/41 dB (A)
	Moisture Protection	IPX4
Refrigerant / Charge	R32 / 0.42kg	
BPS Certificate License No.	Product safety & Quality Q-2824	
<b>Unit Dimensions</b>	Width x Depth x Height	450 x 640 x 350mm
	Net weight	29 kg.


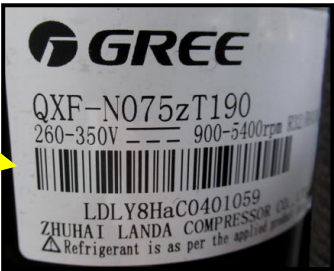
<b>Shell Cabinet</b>	Appearance	White color, powder coated metal. Air ventilation on both side and top.
	Dimensions W x D x H	450 x 610 x 352mm
	Back Logo ( Dimensions )	KOLIN ( 190mm x 80mm ) Green color
		Full DC Inverter ( 44mm x 11mm )
<b>Face Cover</b>	Appearance	White color, plastic materials. With KOLIN, QUAD AI, and INV. logo
	Dimensions (W x D x H)	448x 53 x 350mm
	Swing louver (Horizontal) Swing louver (Vertical)	17 x 110mm /12pcs. / White (manual) 178 x 30 x 45mm / Black (motorize)
	Air intake panel (Dimensions): Front Kolin logo : Quad AI logo : Full DC Inverter logo:	307 x 34 x 347mm Cool gray color (size) 45 x 16mm Cool gray color (size) 50 x 22.5mm 37 x 9.5mm
	Air Filter (Appearance) : (Dimensions) :	White color 264mm x 288mm
<b>Power cord</b>	Color / Size : Specifications :	Dirty White color / Length 1.5 meter SJT VW-1/105°C 300V / 3 x 18AWG (0.824mm <sup>2</sup> ) NEMA 6-15 type

### Unit checking for inner part:

<b>Compressor Motor</b>	Brand name: Model Number: Specifications: Manufacturer: Appearance:	GREE QXF-N075z T190 260-350V / 900-5400rpm / R32/R410A Zhuhai Landa Compressor Co. LTD Black coated Internal OLP
<b>Fan Motor</b>	Type: Part number: Model : Specifications: Manufacturer: Appearance :	Permanent Magnet Brushless DC Motor 150104060091 ZWF-45A / CJ45A-ZL / DC310V/ 45W/ B / 8P / IP44 / 1050r/min. Jiangsu Shangqi Group Co Ltd White Coated casing
<b>Control Module</b>	<b>Main Board</b>	300027064696 / W28E13DP GRJ28E-A8 (V1) T1.6 / 14
	<b>Electrolytic Capacitor</b>	470µf / 450V / 105°C (2 pc.)
	<b>Heat zinc</b>	Dimensions (W x D x H) 132 x 50 x 40mm
	<b>Control box</b>	GI materials, with plastic base inside
	<b>Remote Control (Type)</b>	YAW1F9 / AAA battery 1.5V x 2 305001000097
	<b>WIFI Module (Model)</b>	300145000144 / WB64AR

	<b>Display Panel Board</b>	300001060992 (D28EF13MJ) GRJ28E-B3 (V1) 2022/03/11/13 T1.6
	<b>Swing Motor</b>	MP24VA / 12V / Step Motor ( 1pc.)
<b>Electric Expansion Valve</b>	Brand / Specifications	DUNAN / DC 12V / DPF07-766
<b>Unit Sensors</b>	Temperature sensor: Tube sensor: Temperature Sensor Tube Sensor: Comp. temp. sensor	GL 15K / 382mm (L) Evaporator Side GL 20K / 634mm (L) Evaporator Side GL 15K / 450mm (L) Condenser Side GL 20K / 877mm (L) Condenser Side GL 50K / 688mm (L)
<b>Evaporator</b>	Aluminum fins : Copper tubing : Dimensions :	199pcs. Blue fins (Straight design) 3 rows of 48 lines of Ø 7.0mm (L x H x W)265 x 306 x 38.mm Coated by blue resin paint
<b>Condenser</b>	Aluminum fins : Copper tubing : Dimensions :	449pcs. Blue fins (C curve design) 3 rows, 48 lines with Ø 5.0mm each (L x H x W) 660 x 325 x 34mm
<b>Tubing system</b>	Capillary tube (1pc.): Suction tube : High pressure tube : Strainer / Drier :	Ø 2.3mm x 650mm length Ø 9.5mm outside diameter Ø 8.0mm outside diameter 25.5mm x 202mm
<b>Wheel blower</b>	Appearance: Dimensions :	Ivory color / ABS Plastic materials 67 leaves 6mm gap each Ø193mm x 81mm
<b>Propeller Fan</b>	Appearance: Dimensions :	Ivory color / ABS Plastic materials / 5 Blades Ø310mm x 100mm
<b>Other Parts</b>	Unit Base:	White coated metal materials
	Top cover / Divider:	Evaporator side - GI materials Condenser side - Plastic materials
	Fan Motor Bracket:	Plastic materials, built-in to divider and mounted on base.

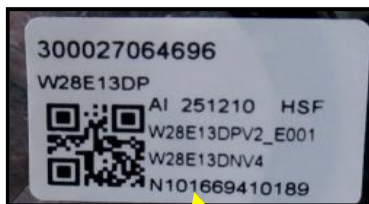
### Unit Inner Part Photo's and Spec's.

		<p style="text-align: center;"><b>COMPRESSOR</b></p> <p style="text-align: center;">GREE QXF-N075ZT190 260-350V / 900-5400rpm / R32/R410A</p>
---	---	---



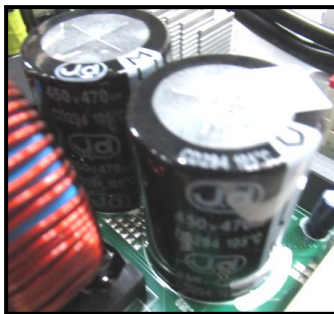
### FAN MOTOR

Permanent Magnet Brushless DC Motor  
150104060091  
ZWF-45A / CJ45A-ZL /  
DC310V/ 45W/ B / 8P / IP44 / 1050r/min.



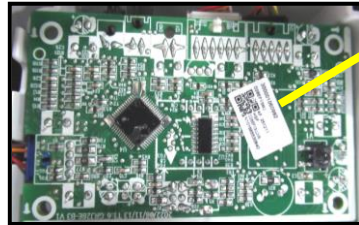
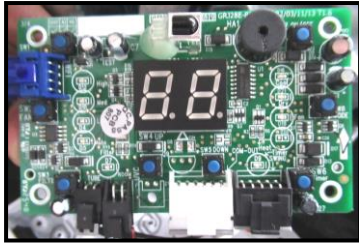
### MAIN BOARD

300027064696 / W28E13DP  
GRJ28E-A8 (V1) T1.6 / 14



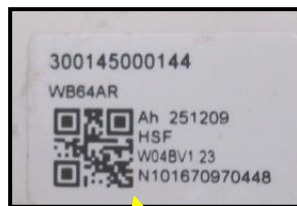
### ELECTROLYTIC CAPACITOR

470 $\mu$ f / 450V (2 pc.)



**DISPLAY BOARD**

300001060992 (D28EF13MJ)  
GRJ28E-B3 (V1) 2022/03/11/13 T1.6



**WIFI MODULE**

300145000144 / WB64AR



**REMOTE CONTROL**

YAW1F9 / AAA battery 1.5V x 2



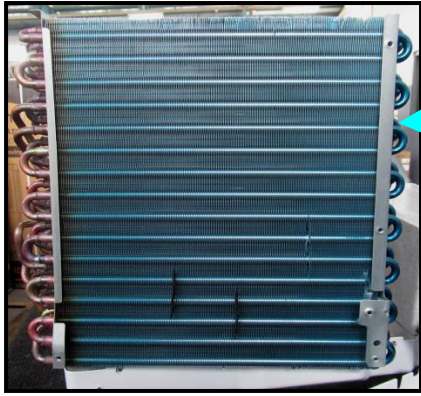
**ELECTRIC EXPANSION VALVE**

DUNAN / DC 12V /DPFX07-766



**SWING MOTOR**

MP24VA / 12V / Step Motor (1pc)



### EVAPORATOR

199pcs. Blue fins (Straight design)  
3 rows of 48 lines of  $\text{Ø}$  7.0mm  
(L x H x W) 265 x 306 x 38mm  
**The long U bend side was coated  
by Blue Resin Paint**



### CONDENSER

449pcs. Blue fins (C curve design)  
3 rows, 48 lines with  $\text{Ø}$  5.0mm each  
(L x H x W) 660 x 325 x 34mm



### BLOWER WHEEL

Ivory color / ABS Plastic materials  
67 leaves  
 $\text{Ø}$ 193mm x 81mm







### PROPELLER FAN

Ivory color / ABS Plastic materials / 5  
Blades  $\text{Ø}$ 310mm x 100mm

	<p style="text-align: center;"><b>ACCESSORIES</b></p> <p style="text-align: center;">Owner/s Manual Smart Controller Manual Warranty Card Remote Control AAA battery Screw (2pcs) Drain Pan</p>
---	---

**COMPARISON OF KA-75GQAIINV32 TO SAMPLE UNIT**

PARTS	KA-75GQAIINV32	SAMPLE UNIT	REMARKS
<b>COMPRESSOR</b>	GREE QXF-N075ZT190 260-350V / 900-5400rpm / R32/R410A	GREE QXF-N075ZT190 260-350V / 900-5400rpm / R32/R410A	<b>SAME</b>
<b>FAN MOTOR</b>	Permanent Magnet Brushless DC Motor 150104060091 ZWF-45A / CJ45A-ZL / DC310V/ 45W/ B / 8P / IP44 / 1050r/min.	Permanent Magnet Brushless DC Motor 150104060091 ZWF-45A / CJ45A-ZL / DC310V/ 45W/ B / 8P / IP44 / 1050r/min.	<b>SAME</b>
<b>MAIN BOARD</b>	300027064696 / W28E13DP GRJ28E-A8 (V1) T1.6 / 14 	300027063703 / W28E13CFJ GRJ28E-A8 [V1] 2024 / 03/14 / 13 / T1.6 	<b>DIFFERENT</b>
<b>DISPLAY BOARD</b>	300001060992 / D28EF13MJ GRJ28E-B3 (V1) 2022/03/11/13 T1.6 	300001061392 / D28EF13ACJ GRJ28E-B3 V1 2022/3/11/13 T1.6 	<b>DIFFERENT</b>
<b>WIFI MODULE</b>	WB61AR / 300001060571	<b>NONE</b>	

<b>REMOTE CONTROL</b>	YAW1F9 / AAA battery 1.5V x 2	YAWIF9 / AAA battery 1.5Vx2	<b>SAME</b>
<b>ELECTRIC EXPANSION VALVE</b>	DUNAN / DC 12V DPFX07-766	DUNAN / DC 12V DPFX07-766	<b>SAME</b>
<b>BLOWER WHEEL</b>	Ivory color / ABS Plastic materials 67 leaves Ø193mm x 81mm	Ivory color / ABS Plastic materials 67 leaves Ø193mm x 81mm	<b>SAME</b>
<b>PROPELLER FAN</b>	Ivory color / ABS Plastic materials / 5 Blades Ø310mm x 100mm	Ivory color / ABS Plastic materials / 5 Blades Ø310mm x 100mm	<b>SAME</b>
<b>EVAPORATOR</b>	Blue fins (Straight design) 3 rows of 48 lines / Ø7.0mm (L x H x W) 265 x 306 x 38mm	Blue fins (Straight design) 3 rows of 48 lines / Ø 7.0mm (L x H x W) 265 x 306 x 38mm	<b>SAME</b>
<b>CONDENSER</b>	Blue fins (L curve design) 3 rows, 48 lines with Ø 5.0mm each (L x H x W) 643 x 325 x 34mm	Blue fins (L curve design) 3 rows, 48 lines with Ø 5.0mm each (L x H x W) 660 x 323.85 x 34.2mm	<b>SAME</b>

For your reference,

Prepared by : Jayson L. Pagacita  
QC Staff

Noted by : Alberto I. Francisco  
QC Asst. Supervisor

Approved by : Engr. Kenneth P. Zamora  
Asst. Plant Operations Manager