



To : Mr. Oliver M. Filoteo  
Executive Vice President  
From : Quality Control Department  
Re : Water Dispenser  
Date : October 10, 2023  
Reference no. : QCD-WD-BLC-2088B-23-10-001  
Cc. : FDF. / A De Rivera /Dept. concern

---

Listed below are the specifications and parts for new Bottom load hot and cold water dispenser received and inspected this October 9, 2023.

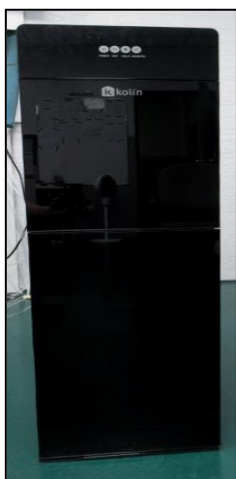
### **KWD-BLC-2088B**

#### **Details checking:**

**Model** : KWD-BLC-2088B  
**Description** : Bottom load water dispenser  
**EAN Number** : 4 806508 235939  
**P/O Number** : KT-2306NB-01  
**Lot number** : 013623001  
**Serial number range** : 01362306-10001 to 10948 (948 units)  
**Printing Features** : Good, clear, and correct

---

**Inspected units:** Kolin Serial number 01362306-10944, 10948, 10940 and 10947



#### **Remarks:**

First Shipment of this new model of Water Dispenser, with faucet switch design  
Elegant black color protected by plastic glass.

#### **Recommendations:**

It is recommended for rework before the distribution to the dealers. Apply turtle wax on the top part of the unit to remove the water marks due to the plastic of packaging.

**Note:** No sample unit received for comparison, all details reported are based on the actual unit

**Packaging and Carton box checking:**

<b>Packaging Dimensions:</b>	W x D x H Gross weight	350 x 365 x 1060mm 14.6 kg.
<b>Carton Box Dimensions:</b>	W x D x H / Weight: Type / Thickness:	352 x 365 x 1057 mm / 1620g. Double wall, BE flute / 4.0mm
<b>Packaging Support:</b>	4 corner support: top and bottom support	Styrofoam / Thickness : 12mm Styrofoam / Thickness : 17mm
<b>Accessories:</b>	1) Owner's manual 2) Warranty card	

**Unit checking for outer part:**

<b>Specifications</b>	Function	Hot / Warm / Cold
	Rated Voltage	230V ~
	Frequency	60 Hz
	Rated Cooling Current	0.75 A
	Rated Input Power / HOT	550 W
	Rated Input Power / COLD	90 W
	Hot Water Capacity	5L/h 85-95°C
	Cold Water Capacity	2.0L/ h 5-10° C
	Refrigerant / Charge	R134a / 35g
<b>Unit Dimension</b>	W x D x H Net weight	320 x 315 x 1005mm 13.6 kg
<b>Appearance</b>	Matte black coated metal & glossy black cover by plastic glass material with concave handle both sides, KOLIN logo in upper center.	
<b>Front panel</b>	Appearance: Dimensions: (W x D x H)	Black plastic materials with Power / Hot /Cold /No Water Indicator 319 x 115x 42mm
<b>Kolin Logo</b>	Dimensions / cool gray color	63 x 22mm ( W x H )
<b>Cabinet for Bottle</b>	White color / (Dimension)	315 x 265 x 540mm / Plastic Material
<b>Upper Cabinet</b>	Black Plastic Material	248 x 85 x 325mm (Dimension )
<b>Faucet Switch</b>	RED ( Hot ) / GREEN ( Warm ) / BLUE ( Cold )	
<b>Power Cord</b>	Black color / SJT 3/C 18AWG ( 0.824mm <sup>2</sup> ) 105°C / 600V ( 1665mm Lenght	

### Unit checking for inner part:

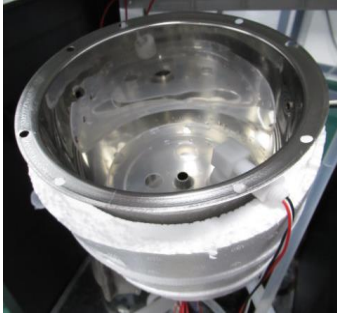
<b>Compressor Motor:</b>	Type: Model: Specifications: Manufacturer: Appearance: OLP: Relay:	HuaJun QD30LW 220-240V / R134a NingBO An uodan Machinery Co. LTD Black Coated Casing MP4SE134LL / 30-52 / 23F MS2-22B-01 / 23E
<b>Control Module:</b>	<b>Control PCB :</b>	SRJ-03 / (V1.2) Y20211022
	<b>Display Indicator Board:</b>	18935797769 / XS-BX-CBJ12-D2 (4 LED light Indicator)
	<b>Water Pump:</b>	18365-A / 450Ma / 4800r/min / DC12V 5W / 35°C / 13968244807 /
	<b>Hot &amp; cold Switch : RED &amp; GREEN</b>	KCD3 / 16 (4)A 250VAC / 20A 125VAC
	<b>Heating thermo Disc :</b>	KSD 301 / 250VAC / 85°C / 95°C ( 2PCS)
	<b>Thermostat:</b>	WP5 / 6A / 250V/ 50-60Hz / Ixilida co ltd
<b>Condenser :</b>	Color: Metal tubing : Dimensions : (L x H x W)	Black Coated Steel 1 row 18 lines Ø 5.0mm / 282 x 780 x 6mm
<b>Cold Water Tank:</b>	Appearance :	Stainless steel with Styrofoam cover
<b>Hot Water Tank:</b>	Appearance:	Stainless steel with foam cover
<b>Water Tank Hose:</b>	Dimension:	Ø 9 x 325mm Ø9 x 600mm
		Ø 13 x 330mm for Cold
		Ø 9 x 450mm (2pcs) for faucet
<b>Stainless Pipe:</b>	Appearance: Dimension:	Plastic and stainless materials Ø 6 x 510mm

## Inner Parts Overview

	<b>COMPRESSOR</b> HuaJun QD30LW 220-240V / R134a
	<b>COMPRESSOR OLP</b> MP4SE134LL / 30-52 / 23F
	<b>COMPRESSOR RELAY</b> MS2-22B-01 / 23E
	<b>CONTROL PCB</b> SRJ-03 / (V1.2) Y20211022
	<b>WATER PUMP</b> 18365-A / 450Ma / 4800r/min / DC12V 5W / 35°C / 13968244807 /
	<b>DISPLAY INDICATOR</b> 18935797769 / XS-BX-CBJ12-D2 2020-02-24 (V7)



**PUMP PIPE**  
Plastic and Stainless Materials  
Ø 6 x 510mm



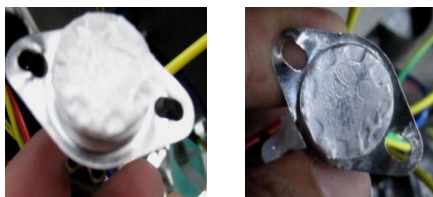
**COLD WATER TANK**  
STAINLESS STEEL



**WATER FAUCET**  
HOT / WARM / COLD WATER






**HOT & COLD SWITCH**  
KCD3 / 16 (4)A 250VAC / 20A 125V AC



**THERMODISC**  
KSD 301 / 250VAC / 85°C / 95°C ( 2PCS)



**HOT WATER TANK**  
STAINLESS STEEL

	<p style="text-align: center;"><b>THERMOSTAT</b></p> <p style="text-align: center;">WP5 / 6A / 250V/ 50-60Hz / Ixilida co ltd</p>
	<p style="text-align: center;"><b>ACCESSORIES</b></p> <p style="text-align: center;">Owner's Manual and Warranty card</p>
	<p style="text-align: center;"><b>POWER CORD</b></p> <p style="text-align: center;">Black color / SJT 3/C 18AWG (0.824mm<sup>2</sup>) 105°C / 500V (1665mm Length)</p>

For your reference,

Prepared by : Jayson L. Pagacita  
Quality Control Staff

Reviewed by : Reiner S. Abaquita  
Quality Engineer

Noted by : Alberto I. Francisco  
QC, Asst. Supervisor

Approved by : Mr. Fernando D. Feliciano  
Plant Operations Manager