

GENERAL NOTES AND SPECIFICATIONS :

1. ALL EQUIPMENT SHALL BE INSTALLED IN APPROXIMATE LOCATION AS SHOWN ON THE DRAWINGS.
2. ALL EQUIPMENT SHALL SET ON LEVEL REINFORCED CONCRETE FOUNDATION AT LEAST 150mm. HIGHER THAN THE FLOOR LINE , IF APPLICABLE.
3. ALL EQUIPMENT SHALL BE MOUNTED ON OR SUPPORTED WITH VIBRATION ISOLATION UNITS OR ASSEMBLIES AS SPECIFIED AND OR AS SHOWN ON THE DRAWINGS. INSTALLATION OF ALL WORKS SHALL BE DONE IN A NEAT AND WORKMANLIKE MANNER. IMPROPERLY STEWARD OR FINISH AS DETERMINED BY THE ARCHITECT SHALL BE REMOVED AND REPLACED AT NO EXTRA COST.
5. ALL MATERIALS TO BE USED SHALL BE BRAND NEW & CLEAN
6. DEVIATIONS AND REVISIONS FROM PLANS SHALL BE REFERRED TO THE ARCHITECT FOR REVIEW AND APPROVAL.
7. ALL NECESSARY GOVERNMENT PERMIT SHALL BE SECURED AND PAID FOR BY THE GENERAL CONTRACTOR.
8. ALL DIMENSION ARE IN MILLIMETER UNLESS OTHERWISE SPECIFIED.
9. ALL MECHANICAL WORKS SHALL BE IN ACCORDANCE WITH THE LATEST MECHANICAL ENGINEER'S CODE ASVE AND ASHRAE STANDARD AND MAIL MERCHANT GUIDELINES.
10. MECHANICAL CONTRACTOR SHALL ALWAYS OBSERVE SAFETY AND ORDERLINESS.
11. MECHANICAL CONTRACTOR SHALL VERIFY SITE PRIOR TO ACTUAL INSTALLATION.
12. THE MECHANICAL CONTRACTOR SHALL CONDUCT TESTING, BALANCING AND COMMISSIONING OF ALL A/C & VENTILATING EQUIPMENT.
13. FCU DRAIN (PVC SERIES 150) MUST BE TAPPED TO NEAREST DRAIN PROVISION AND MUST BE INSULATED WITH 1" THICK RUBBER INSULATION. AND WRAPPED WITH POLYETHYLENE TAPE.

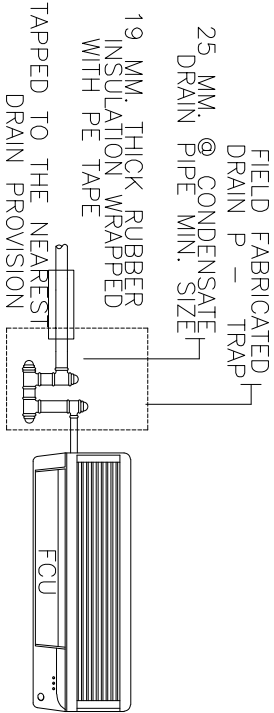
AIR CONDITIONING AND VENTILATING EQUIPMENT SPECIFICATIONS

AIR COOLED CONDENSING UNIT

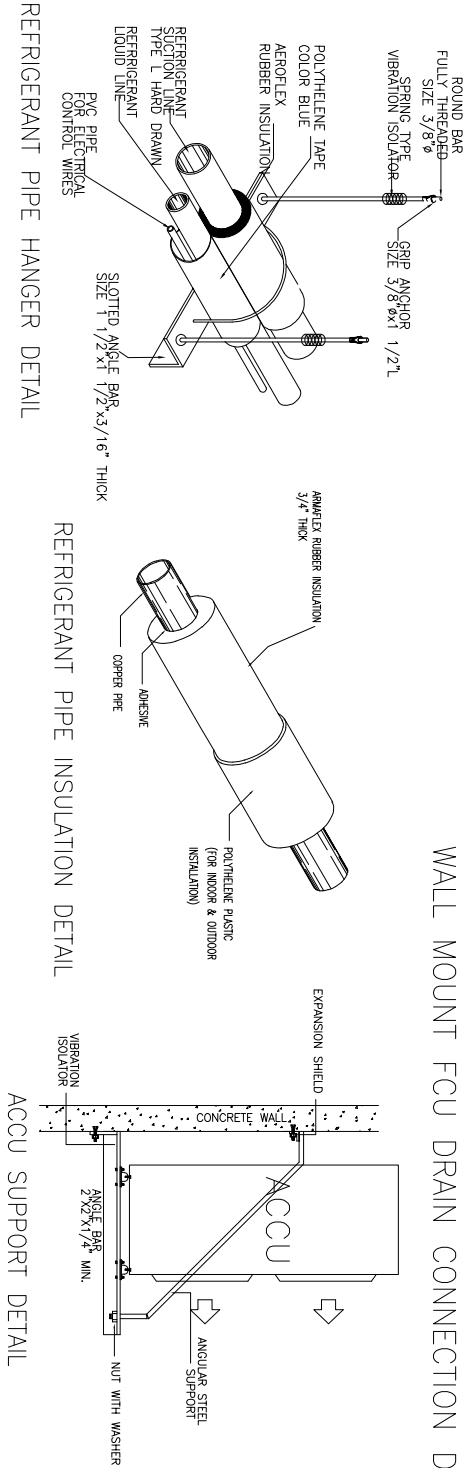
QUANTITY	UNITS DESIGNATION	AREA SERVED	NOMNAL COOLING CAPACITY		OPERATING TEMPERATURE				COMPRESSOR DATA				CONDENSER DATA			
			HP	BTU/ HR	°C	°F	°C	°F	NO :	KW INPUT	ELECTRICAL CHARACTERISTIC	NO : OF PROPELLER FAN	DRIVE			
1	ACCU/2.0HP-CS	LIVING AREA	2.0	24000	4.44	40	48.8	120	1	2.0	230	1	60	1	375	R E M A R K S  UNITS ARE PROVIDED WITH SAFETY DEVICES, TIMER MOTOR FOR COMPRESSOR, ANTI-CYCLING HIGH & LOW PRESSURE CONTROLS AND OTHER STANDARD ACCESSORIES CONTROLS AND OTHER STANDARD AND VIBRATION ISOLATORS. USE REFRIGERANT R410A
1	ACCU/1.0HP-CS	BEDROOM 1	1.0	14000	4.44	40	48.8	120	1	1.0	230	1	60	1	275	
1	WAC/0.75HP	BEDROOM 2	0.75						1	0.75	230	1	60	1	225	

FAN COIL UNIT

QUANTITY	UNIT DESIGNATION	AREA SERVED	NOMINAL COOLING CAPACITY		SUPPLY AIR		COIL DATA			MOTOR DATA				R E M A R K S	
			HP	BTU/ HR	CFM	CMH	NO. : OF ROWS	NO. OF STAGES	FINHS/ INCH	TYPE OF DRIVE	WATTS	ELECTRICAL CHARACTERISTICS			
1	FCU/2.5HP-CS	AS-SHOWN	2.0	24000	670	1139	-	-	12	DIRECT	100	230	1	60	UNITS ARE CEILING CONCEALED, DUCTED TYPE, COMPLETE WITH AIR FILTERS AND STANDARD ACCESSORIES.
1	FCU/2.5HP-CS	AS-SHOWN	1.0	24000	670	1139	-	-	12	DIRECT	100	230	1	60	UNITS ARE CEILING CONCEALED, DUCTED TYPE, COMPLETE WITH AIR FILTERS AND STANDARD ACCESSORIES.

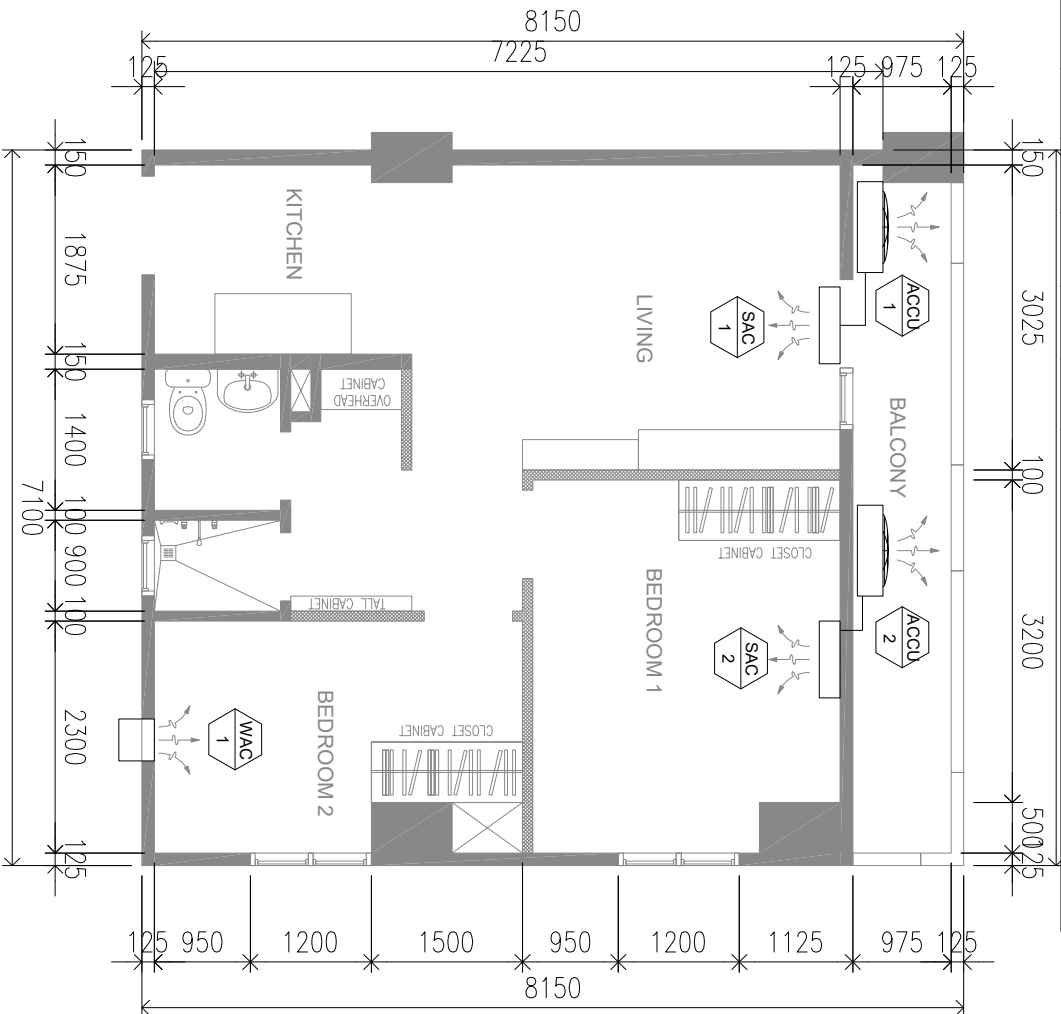


WALL MOUNT FCU DRAIN CONNECTION DETAIL



REFRIGERANT PIPE INSULATION DETAIL

ACCU SUPPORT DETAIL



THESE DRAWINGS ARE THE PROPERTY OF THE ARCHITECT AND ARE NOT TO BE REPRODUCED WITHOUT SPECIFIC PERMISSION. (IN 24, SEC. 25, PARA 4)

COMMERCIAL PROPERTY BUILDERS INC.

CONTRACTOR - BUILDERS - DESIGNER & CONSULTANT

2nd FLOOR, G. RAMIREZ & CO. BUILDING  
4083 DEL MONTE AVE. BERRY, MANRESA  
DURBAN CITY PHIL.

Telephone: 709-5551  
E-mail Address: cpbuilders@yahoo.com

PROFESSIONAL MECHANICAL ENGINEER:

PRC. NO.	DATE:
PRJ. NO.	DATE:
T.I.N.	PLACE:

PROJECT TITLE

PROPOSED INTERIOR RENOVATION

Unit 711, 7F, Tower 3, Vireo Towers, Arco South, Tugue City

PROJECT OWNER

APPROVED BY:

ATTY. MAMSIE QUIMOSING

SHEET CONTENT

AIR-CONDITIONING LAYOUT

REVISIONS

SHEET NO.

M

DESIGN BY: CPB  
ENCODER BY: JQC  
RENDER BY: DATE:

1

VIREO  
AIR-CONDITIONING LAYOUT  
SCALE 1:75 MTS