



November 6, 2024

NATIONAL SHRINE OF OUR LADY OF LOURDES
KANLAON COR. N. S. AMORANTO ST. BRGY. LALOMA, QUEZON CITY
TEL#: 0991-3918000

Dear Ma'am/Sir,

Kolin Marketing Inc., is extremely honored for your endorsement of Kolin brand and we are please to offer you with a special price/s for the following items.

A. EQUIPMENT & INSTALLATION

QTY	U/M	MODEL / DESCRIPTION	SRP	DISCOUNTED PRICE		AMOUNT
1	UNIT/S	MODEL: KAG-200WCINV KOLIN WINDOW TYPE QUAD SERIES AIRCONDITIONER 19,080 Kj/h (2.0HP) FULL DC INVERTER W/ WIFI R-32 (WxDxH) 26"x28"x17"	43,595.00	32,204.10	PHP	32,204.10
TOTAL UNIT COST					PHP	32,204.10
ESTIMATED COST OF INSTALLATION (please see attached)					PHP	1,200.00
OTHERS: DELIVERY CHARGE					PHP	600.00
TOTAL ESTIMATED COST OF THE PROJECT					PHP	34,004.10

TERMS OF PAYMENT:

FULL PAYMENT OF UNIT AND DELIVERY CHARGE. IF CHECK, SUBJECT FOR 3 DAYS CLEARING.

WARRANTY:

FOR WINDOW TYPE: ONE (1) YEAR FREE PARTS AND LABOR, THREE YEARS (3) MAIN PCB, TEN (10) YEARS WARRANTY ON COMPRESSOR.

NOTES: PRICES ARE SUBJECT TO CHANGE WITHOUT PRIOR NOTICE.

PRICES IS VAT INCLUSIVE.

**** Cost of Installation is Package with the Unit(s), this cost cannot avail separately.**

We thank you for giving opportunity to offer our product and services, hoping we receive your purchase order.

If you need assistance, don't hesitate to call the under signed at 0917-807-8607 or email at kmi_asst@kolinphil.com.ph

Very Truly Yours,


JANELLEN S. LIM
KMI-ASSISTANT

Noted by:

MART NATHANIEL R. FLORES
KMI-SUPERVISOR

Approved By:


MS. EDITHA M. FLORES
AVP - FINANCE

KMI-QUOTE-11-24-0941
ECY-22%/1.8K

Conforme:


SIGNATURE OVER PRINTED NAME

Kolin Marketing, Inc.

1854 Sta. Rita St., Guadalupe Nuevo, Makati City

Tel.: (632) 8852-6473

Fax: (632) 8852-2170 / (632) 8852-4792

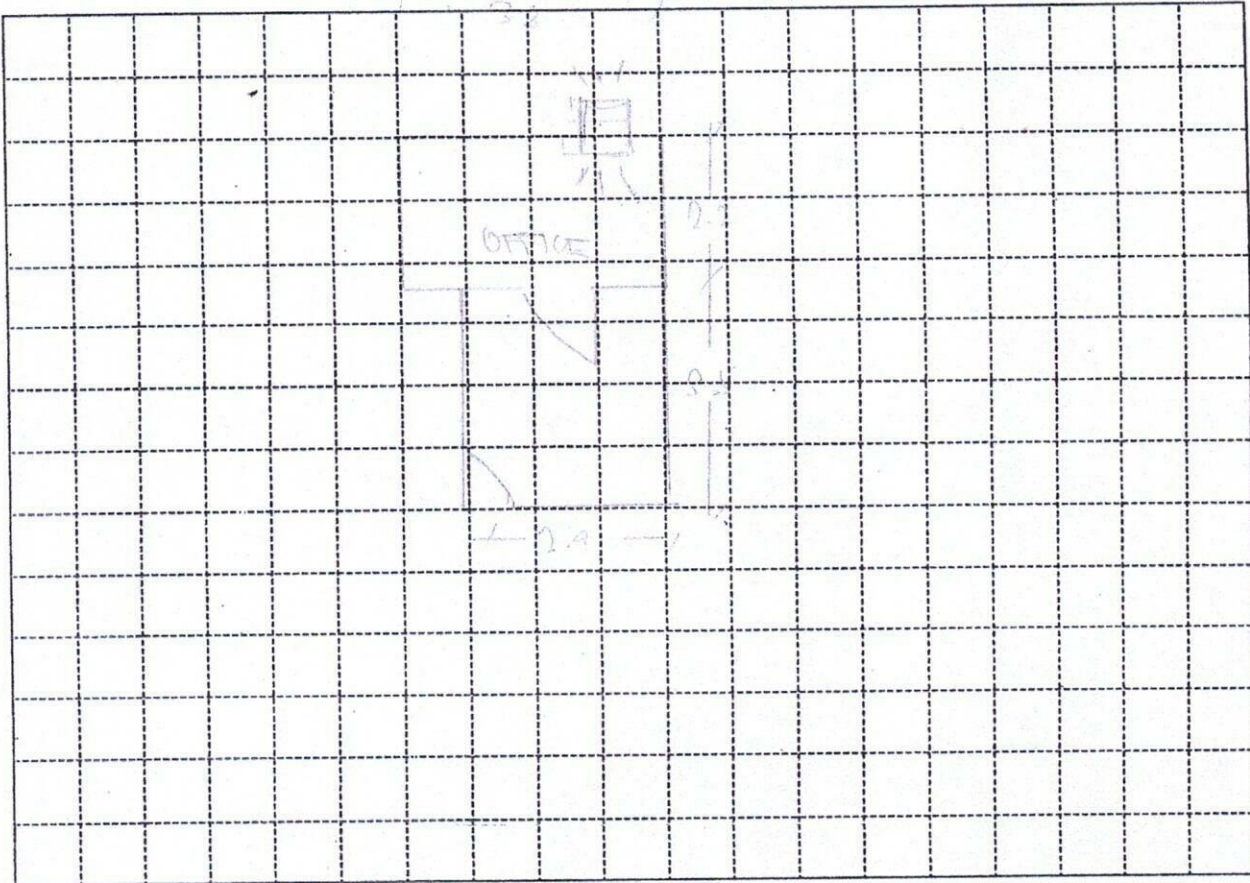
 www.kolinphil.com.ph / kolinphilippines



№ 003553

Recommended Product Model : 46-20VCH

2- ~~SPREADSHEET~~ ^{WIP OUTLINE} ~~PROVIDE~~ ^{LINK} ~~(EXTENSIVE)~~ ^(66 X 47 CM) ~~TABLE~~ ^{AND} ~~OUTPUT~~ ^{FOR}



Indoor Unit Location : RIGHT CORNER, RIGHT OF WINDOW TYPE
 Outdoor Unit Location : AT THE BACK
 Pipe Length : _____
 Special Note : _____

Installation Cost Estimate			
Material Description	Qty.	Unit Cost	Total Cost
Copper Tube (excess of 10 ft.)	2330, 2430, 2520, 3520, 4620		
Wire (Royal Cord-signal wire) (excess of 10ft.)	2.0mmx4C		
Wire (Royal Cord - Breaker to ODU)	3.5mm / 5.5mm x 3C		
Circuit Breaker	20A, 30A, 40A/1ph, 40A/3ph		
Bracket (ODU)	(Imptd. / Fabricated) ; (Floor / Wall)		
Bracket (WAC)	Angle Type		600
PVC Pipe (drain)	1/2" , 3/4"		
PVC Pipe (electrical)	3/4" , 1"		
Drain Pump			
Drain Pump Hose			
Chipping Works	mtr.		
Dismantling Fee (existing air-conditioner)			
Initial Charge			1,200
TOTAL ESTIMATE		P	1,200

Note :

- Initial Charge includes labor, 10ft. Copper tube, 10ft. Royal cord, Circuit breaker, Outdoor Bracket (SAC), Indoor Bracket (PAC) and Consumable materials.
- Survey fee will be **deducted** in the installation fee.

Prepared by:

Signature Over Printed Name

Customer Conforme:

Signature Over Printed Name