

MARGARETHA HOME FOR THE BLIND  
81 CALDERON ST., BRGY. PROJECT 4 QUEZON CITY  
TEL#: 0993-7379020

Dear Ma'am/Sir,

Kolin Marketing Inc., is extremely honored for your endorsement of Kolin brand and we are please to offer you with a special price/s for the following items.

A. EQUIPMENT & INSTALLATION

\* OPTION 1 \*

QTY	U/M	MODEL / DESCRIPTION	SRP	DISCOUNTED PRICE		AMOUNT
2	UNIT/S	MODEL: KAG-250WCINV KOLIN WINDOW TYPE QUAD SERIES AIRCONDITIONER 24,120 Kj/h (2.5HP) FULL DC INVERTER W/ WIFI R-32 (WxDxH) 26"x31.5"x17"	48,695.00	35,208.20	PHP	70,416.40
6	UNIT/S	MODEL: KAG-145WCINV KOLIN WINDOW TYPE QUAD SERIES AIRCONDITIONER 13,210 Kj/h (1.5HP) FULL DC INVERTER W/ WIFI R-32 (WxDxH) 22"x28"x15"	32,995.00	23,776.20	PHP	142,657.20
TOTAL UNIT COST					PHP	213,073.60
ESTIMATED COST OF INSTALLATION (please see attached)					PHP	14,400.00
OTHERS: DELIVERY CHARGE					PHP	600.00
TOTAL ESTIMATED COST OF THE PROJECT					PHP	228,073.60

\* OPTION 2 \*

QTY	U/M	MODEL / DESCRIPTION	SRP	DISCOUNTED PRICE		AMOUNT
2	UNIT/S	MODEL: KAG-250WCINV KOLIN WINDOW TYPE QUAD SERIES AIRCONDITIONER 24,120 Kj/h (2.5HP) FULL DC INVERTER W/ WIFI R-32 (WxDxH) 26"x31.5"x17"	48,695.00	35,208.20	PHP	70,416.40
6	UNIT/S	MODEL: KA-150MCARINV32 KOLIN WINDOW TYPE CREO SERIES AIRCONDITIONER 12,800 Kj/h (1.5HP) FULL DC INVERTER R-32 WITH REMOTE (WxDxH) 17.7"x26.6"x13.8"	27,995.00	20,276.20	PHP	121,657.20
TOTAL UNIT COST					PHP	192,073.60
ESTIMATED COST OF INSTALLATION (please see attached)					PHP	14,400.00
OTHERS: DELIVERY CHARGE					PHP	600.00
TOTAL ESTIMATED COST OF THE PROJECT					PHP	207,073.60

TERMS OF PAYMENT:

FULL PAYMENT OF UNIT AND DELIVERY CHARGE. IF CHECK, SUBJECT FOR 3 DAYS CLEARING.

WARRANTY:

FOR WINDOW TYPE: ONE (1) YEAR FREE PARTS AND LABOR, THREE YEARS (3) MAIN PCB, TEN (10) YEARS WARRANTY ON COMPRESSOR.

NOTES: PRICES ARE SUBJECT TO CHANGE WITHOUT PRIOR NOTICE.

PRICES IS VAT INCLUSIVE.

\*\* Cost of Installation is Package with the Unit(s), this cost cannot avail separately (cost will be based on actual works).

\*\*\* You may settle first payment for unit/s & delivery. Installation payment can be settled directly to installer after actual works.

We thank you for giving opportunity to offer our product and services, hoping we receive your purchase order.

If you need assistance, don't hesitate to call the under signed at 0917-807-8607 or email at kmi\_asst@kolinphil.com.ph

\*\* CURRENTLY NO AVAILABLE STOCKS FOR ANGLE BRACKET.

Very Truly Yours,

JANELLEN S. LIM  
KMI-ASSISTANT

Noted by:

MART NATHANIEL R. FLORES  
KMI-SUPERVISOR

Approved By:

MS. EDITHA M. FLORES  
AVP - FINANCE

Conforme:

SIGNATURE OVER PRINTED NAME

KMI-QUOTE-08-25-0638  
ECY-24%/1.8K/1.3K/1K



August 29, 2025

Margaretha Home for the Blind

81 Calderon St. Brgy. Project 4 Quezon City

[0993-7379020](tel:0993-7379020)

MODEL	QUANTITY
KAG-250WCINV	2
KAG-145WCINV	6

<b>OFFICE</b>		Area ≈ 15.4 sq.m
---------------	--	------------------

ACU1 1.5hp Windowtype Inverter KAG-145WCINV

Initial charge	P	1,200.00
Angle Bracket	P	600.00

Estimated charges	P	1,800.00
-------------------	---	----------

<b>ROOM A</b>		Area ≈ 15.4 sq.m
---------------	--	------------------

ACU2 1.5hp Windowtype Inverter KAG-145WCINV

Initial charge	P	1,200.00
Angle Bracket	P	600.00

Estimated charges	P	1,800.00
-------------------	---	----------

<b>ROOM B</b>		Area ≈ 15.6 sq.m
---------------	--	------------------

ACU3 1.5hp Windowtype Inverter KAG-145WCINV

Initial charge	P	1,200.00
Angle Bracket	P	600.00

Estimated charges	P	1,800.00
-------------------	---	----------

<b>ROOM C</b>		Area ≈ 15.5 sq.m
---------------	--	------------------

ACU4 1.5hp Windowtype Inverter KAG-145WCINV

Initial charge	P	1,200.00
Angle Bracket	P	600.00

Estimated charges	P	1,800.00
-------------------	---	----------

<b>ROOM D</b>		Area ≈ 14.7 sq.m
---------------	--	------------------

ACU5 1.5hp Windowtype Inverter KAG-145WCINV

Initial charge	P	1,200.00
Angle Bracket	P	600.00

Estimated charges	P	1,800.00
-------------------	---	----------

<b>ROOM E</b>		Area ≈ 12.4 sq.m
---------------	--	------------------

ACU6 1.5hp Windowtype Inverter KAG-145WCINV

Initial charge	P	1,200.00
Angle Bracket	P	600.00

Estimated charges	P	1,800.00
-------------------	---	----------

<b>LEARNING CENTER</b>		Area ≈ 55 sq.m
------------------------	--	----------------

ACU7 2.5hp Windowtype Inverter KAG-250WCINV

Initial charge	P	1,200.00
Angle Bracket	P	600.00

Estimated charges	P	1,800.00
-------------------	---	----------

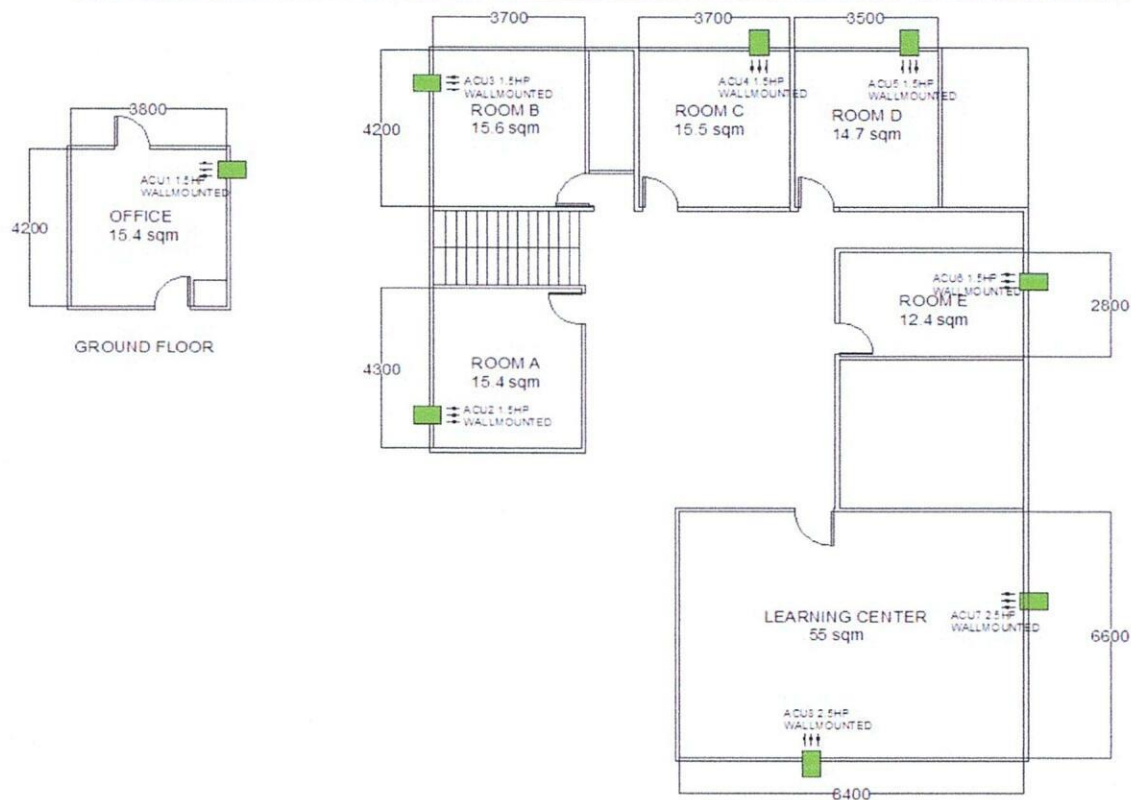


Initial charge  
Angle Bracket

P 1,200.00  
P 600.00

Estimated charges

P 1,800.00



Total Estimated Charges

P 14,400.00

**Validity:** This quotation is valid for a period of fifteen (15) days from the date thereof, subject to our confirmation thereafter.

**Note:**

- 1 Location of unit area not yet final , recommendation of units only
- 2 AC drain line will be tapped to the nearest drain provision provided by the customer's contractor.
- 3 Need for site visit before installation and for final location of units.
- 4 Customer need to modify or repair the window to fit the units each area. Or make a hole in the wall for the units.
- 5 KAG-145WCINV Dimension: W x D x H, = 560 X 708 x 375 mm. (22 x 28 x 15 inches)
- 6 KAG-250WCINV Dimension: W x D x H, = 660 X 800 x 428 mm. (26 x 31.5 x 17 inches)
- 7 Working days: Monday to Saturday, 8am- 5pm with parking. Need working permit.
- 8 Mechanical Plans, Permits, Electrical permits not included.
- 9 Deflectors, masonry, carpentry, chipping & plastering (finishing & restoration) are not included in the installation.
- 10 Electrical power supply (feeder line) **220v/ 60hz/ 1ph** , is not included in the scope of work of Kolin.
- 11 **Final charges will be based on actual installation.**

Prepared by:

Jeffrey Dadios  
Field Surveyor

Customer Conformer:

\_\_\_\_\_  
Signature Over Printed Name

Reviewed by:

Engr. Kenneth Zamora  
Service Supervisor  
Field and Shop Operation