



May 14, 2025

TOMITA INDUSTRIAL & MACHINERY, INC.
#22 5/F TOYOMA GROUP CENTER, TIMOG AVE. BRGY. LAGING HANDA, QUEZON CITY
TEL#: 0923-0825868 / 0917-7205336

Dear Ma'am/Sir,

Kolin Marketing Inc., is extremely honored for your endorsement of Kolin brand and we are please to offer you with a special price/s for the following items.

A. EQUIPMENT & INSTALLATION

QTY	U/M	MODEL / DESCRIPTION	SRP	DISCOUNTED PRICE		AMOUNT
1	UNIT/S	MODEL: KSM-IW25-WCT10M1M32 KOLIN WALL MOUNTED CERTUS AIRCONDITIONER 23,210 Kj/h (2.5HP) REGULAR INVERTER W/ WIFI R-32	49,995.00	33,996.20	PHP	33,996.20
TOTAL UNIT COST					PHP	33,996.20
ESTIMATED COST OF INSTALLATION (please see attached)					PHP	39,295.00
OTHERS: DELIVERY CHARGE					PHP	600.00
TOTAL ESTIMATED COST OF THE PROJECT					PHP	73,891.20

TERMS OF PAYMENT:

FULL PAYMENT OF UNIT AND DELIVERY CHARGE. IF CHECK, SUBJECT FOR 3 DAYS CLEARING.

WARRANTY:

FOR SPLIT TYPE : ONE (1) YEAR FREE PARTS AND LABOR, THREE YEARS (3) MAIN PCB , TEN (10) YEARS WARRANTY ON COMPRESSOR.

NOTES: PRICES ARE SUBJECT TO CHANGE WITHOUT PRIOR NOTICE.

PRICES IS VAT INCLUSIVE.

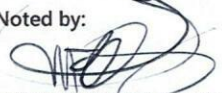
**** Cost of Installation is Package with the Unit(s), this cost cannot avail separately (cost will be based on actual works).**

We thank you for giving opportunity to offer our product and services, hoping we receive your purchase order.

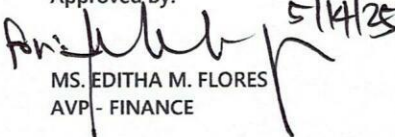
If you need assistance, don't hesitate to call the under signed at 0917-807-8607 or email at kmi_asst@kolinphil.com.ph

Very Truly Yours,


JANELLEN S. LJM
KMI-ASSISTANT

Noted by:

MART NATHANIEL R. FLORES
KMI-SUPERVISOR

Approved By:


MS. EDITHA M. FLORES
AVP - FINANCE

KMI-QUOTE-05-25-0379
ECY-24%/4K

Conforme:

SIGNATURE OVER PRINTED NAME

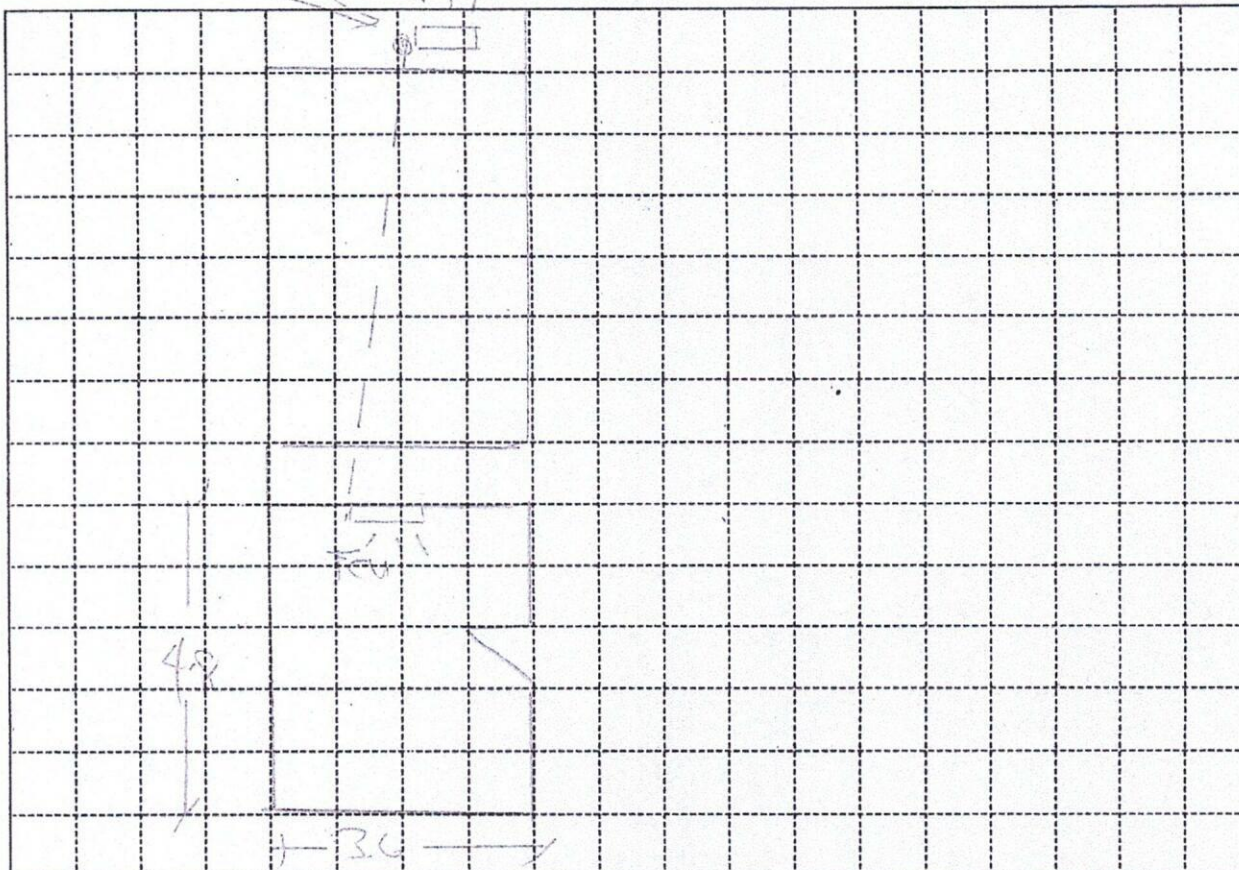


GOLKUP

ACCU

Plan Lay-out

No 003645



Indoor Unit Location : CENTER OF WALL SAME LOCATION.
 Outdoor Unit Location : AT ROOF DECK 2ND LAYER OF MAXIMUM OUTDOOR
 Pipe Length : 16 METERS / 53 FT
 Special Note :

Installation Cost Estimate			
Material Description	Qty.	Unit Cost	Total Cost
Copper Tube (excess of 10 ft.) 2330, 2430, 2520, 3520, 4620	13 FT	400	17,200
Wire (Royal Cord-signal wire) (excess of 10ft.) 2.0mmx4C	56 FT	100	5,600
Wire (Royal Cord - Breaker to ODU) (3.5mm) / 5.5mm x 3C	7 FT	60	420
Circuit Breaker 20A, 30A, 40A/1ph, 40A/3ph	1	1000	1000
Bracket (ODU) SPECIAL BRACKET (Imptd. / Fabricated) (Floor / Wall)	1	2500	2500
Bracket (WAC) Angle Type			
PVC Pipe (drain) 1/2", 3/4"			
PVC Pipe (electrical) 3/4", 1"			
Drain Pump			
Drain Pump Hose WITH 1/2"	7 FT	25	175
Chipping Works INSULATION 1/2" x 3/4" x 6"	8 PCC	350	2800
Dismantling Fee (existing air-conditioner) 1.5 HP			2500
Initial Charge LESS OUTDOOR BRACKET			7700
TOTAL ESTIMATE		P	39,295

Note :

- Initial Charge includes labor, 10ft. Copper tube, 10ft. Royal cord, Circuit breaker, Outdoor Bracket (SAC), Indoor Bracket (PAC) and Consumable materials.
- Survey fee will be deducted in the installation fee.

Prepared by:

Signature Over Printed Name

Customer Conforme:

Signature Over Printed Name