



July 28, 2025

LOPA COMPOUND DEVELOPMENT / HOUSE #4 RAPA
LOPA FARM MARILAQUE HIWAY, SITIO MAYAGAY, BRGY. SAMPALOC TANAY RIZAL
Email: mereyes@foro.ph

Dear Ma'am/Sir,

Kolin Marketing Inc., is extremely honored for your endorsement of Kolin brand and we are please to offer you with a special price/s for the following items.

A. EQUIPMENT & INSTALLATION

| QTY | U/M | MODEL / DESCRIPTION | SRP | DISCOUNTED PRICE | | AMOUNT |
|--|--------|--|-----------|------------------|-----|------------|
| 2 | UNIT/S | MODEL: KSG-IWF-25WFI-8K1M32 KOLIN WALL MOUNTED PRIMUS GOLD AIRCONDITIONER 25,560 Kj/h (2.5HP) FULL DC INVERTER W/ WIFI R-32 | 68,995.00 | 45,436.20 | PHP | 90,872.40 |
| 1 | UNIT/S | MODEL: KA-200MCARINV32 KOLIN WINDOW TYPE CREO SERIES AIRCONDITIONER 19,800 Kj/h (2.0HP) FULL DC INVERTER R-32 WITH REMOTE (WxDxH) 26"x30.7"x16.8" | 36,995.00 | 26,916.20 | PHP | 26,916.20 |
| 4 | UNIT/S | MODEL: KA-150MCARINV32 KOLIN WINDOW TYPE CREO SERIES AIRCONDITIONER 12,800 Kj/h (1.5HP) FULL DC INVERTER R-32 WITH REMOTE (WxDxH) 17.7"x26.6"x13.8" | 27,995.00 | 20,276.20 | PHP | 81,104.80 |
| TOTAL UNIT COST | | | | | PHP | 198,893.40 |
| ESTIMATED COST OF INSTALLATION (please see attached) | | | | | PHP | 66,920.00 |
| OTHERS: DELIVERY CHARGE | | | | | PHP | 600.00 |
| TOTAL ESTIMATED COST OF THE PROJECT | | | | | PHP | 266,413.40 |

TERMS OF PAYMENT:

FULL PAYMENT OF UNIT AND DELIVERY CHARGE. IF CHECK, SUBJECT FOR 3 DAYS CLEARING.

WARRANTY:

FOR SPLIT TYPE : ONE (1) YEAR FREE PARTS AND LABOR, THREE YEARS (3) MAIN PCB , TEN (10) YEARS WARRANTY ON COMPRESSOR.

FOR WINDOW TYPE: ONE (1) YEAR FREE PARTS AND LABOR, THREE YEARS (3) MAIN PCB, TEN (10) YEARS WARRANTY ON COMPRESSOR.

NOTES: PRICES ARE SUBJECT TO CHANGE WITHOUT PRIOR NOTICE.

PRICES IS VAT INCLUSIVE.

**** Cost of Installation is Package with the Unit(s), this cost cannot avail separately (cost will be based on actual).**

We thank you for giving opportunity to offer our product and services, hoping we receive your purchase order.

If you need assistance, don't hesitate to call the under signed at 0917-807-8607 or email at kmi_asst@kolinphil.com.ph

**** SUBJECT FOR ACTUAL SITE VISIT / OCULAR ****

Very Truly Yours,

JANELLEN S. LIM
KMI-ASSISTANT

Noted by:
MART NATHANIEL R. FLORES
KMI-SUPERVISOR

Approved By:

MS. EDITHA M. FLORES
AVP - FINANCE

KMI-QUOTE-04-25-0267-rev4
DCG-24%/7K/1.2K/1K

Conforme:

SIGNATURE OVER PRINTED NAME

Kolin Marketing, Inc.
1854 Sta. Rita St., Guadalupe Nuevo, Makati City
Tel.: (632) 8852-6473
Fax: (632) 8852-2170 / (632) 8852-4792
www.kolinphil.com.ph / kolinphilippines



JULY 24, 2025

LOPA COMPOUND DEVELOPMENT/ HOUSE #4/ RAPA

Lopa Farm Marilaque Hiway Sitio Mayagay, Brgy Sampaloc Tanay Rizal

| MODEL | QUANTITY |
|---------------------|----------|
| KSG-IWF-25Wfy8K1M32 | 2 |
| KA-200MCARINV32 | 1 |
| KA-150MCARINV32 | 4 |

REV4

GROUND FLOOR

| | |
|--------------------------|----------------|
| FOYER/LIVING AREA | Area ≈ 47 sq.m |
|--------------------------|----------------|

| | | | |
|--------------|------------------------------------|----------------------------|------------|
| ACU 1 | 2.5hp Wall mounted Inverter | KSG-IWF-25Wfy8K1M32 | |
| | Estimated Pipe Length : | 40 | ft |
| | Estimated Royal Cord Length : | 45 | ft |
| | Initial Charge | | P 8,500.00 |

Includes:

Labor

10ft Copper Tube

10ft Royal Cord

Outdoor Bracket

Other Consumables

| Additional Charges | Description | Unit | Price Per Unit | Subtotal |
|--------------------------|------------------|---------|----------------|-------------|
| Copper Tube | 1/4"x 5/8" | 30 ft | P 400.00 /ft | P 12,000.00 |
| Royal Cord | 2.mm2 x 4C | 35 ft | P 100.00 /ft | P 3,500.00 |
| Royal Cord (ODU-Breaker) | 3.5mm2 x 3C | 5 ft | P 60.00 /ft | P 300.00 |
| Circuit Breaker(NEMA) | 30A/ 1Ph | 1 pc(s) | P 1,000.00 /pc | P 1,000.00 |
| PVC(Drainline) | Blue 3/4" | 3 pc(s) | P 150.00 /pc | P 450.00 |
| Rubber Insulation | 2 1/8"x3/4" x 6' | 6 pc(s) | P 350.00 /pc | P 2,100.00 |
| Full Thread | 3 meters | 1 pc(s) | P 150.00 /pc | P 150.00 |
| Pipe hanger | 3 inches | 8 pc(s) | P 120.00 /pc | P 960.00 |
| | | | | P 20,460.00 |

| | |
|--------------------------|--------------------|
| Estimated Charges | P 28,960.00 |
|--------------------------|--------------------|

| | | | |
|--------------|------------------------------------|----------------------------|------------|
| ACU 2 | 2.5hp Wall mounted Inverter | KSG-IWF-25Wfy8K1M32 | |
| | Estimated Pipe Length : | 40 | ft |
| | Estimated Royal Cord Length : | 45 | ft |
| | Initial Charge | | P 8,500.00 |

Includes:

Labor

10ft Copper Tube

10ft Royal Cord

Outdoor Bracket

Other Consumables

| Additional Charges | Description | Unit | Price Per Unit | Subtotal |
|--------------------------|------------------|---------|----------------|-------------|
| Copper Tube | 1/4"x 5/8" | 30 ft | P 400.00 /ft | P 12,000.00 |
| Royal Cord | 2.mm2 x 4C | 35 ft | P 100.00 /ft | P 3,500.00 |
| Royal Cord (ODU-Breaker) | 3.5mm2 x 3C | 5 ft | P 60.00 /ft | P 300.00 |
| Circuit Breaker(NEMA) | 30A/ 1Ph | 1 pc(s) | P 1,000.00 /pc | P 1,000.00 |
| PVC(Drainline) | Blue 3/4" | 3 pc(s) | P 150.00 /pc | P 450.00 |
| Rubber Insulation | 2 1/8"x3/4" x 6' | 6 pc(s) | P 350.00 /pc | P 2,100.00 |
| Full Thread | 3 meters | 1 pc(s) | P 150.00 /pc | P 150.00 |
| Pipe hanger | 3 inches | 8 pc(s) | P 120.00 /pc | P 960.00 |
| | | | | P 20,460.00 |

| | |
|--------------------------|--------------------|
| Estimated Charges | P 28,960.00 |
|--------------------------|--------------------|

| | |
|-----------------------|------------------|
| MASTER BEDROOM | Area ≈ 23.4 sq.m |
|-----------------------|------------------|

ACU3 2.0hp Windowtype Inverter KA-200MCARINV32

| | |
|----------------|------------|
| Initial charge | P 1,200.00 |
| Angle Bracket | P 600.00 |

| | |
|-------------------|------------|
| Estimated charges | P 1,800.00 |
|-------------------|------------|

| | |
|------------------|----------------|
| BEDROOM 2 | Area ≈ 14 sq.m |
|------------------|----------------|

ACU4 1.5hp Windowtype Inverter KA-150MCARINV32

| | |
|----------------|------------|
| Initial charge | P 1,200.00 |
| Angle Bracket | P 600.00 |

| | |
|-------------------|------------|
| Estimated charges | P 1,800.00 |
|-------------------|------------|

| | |
|------------------|----------------|
| BEDROOM 1 | Area ≈ 14 sq.m |
|------------------|----------------|

ACU5 1.5hp Windowtype Inverter KA-150MCARINV32

| | |
|----------------|------------|
| Initial charge | P 1,200.00 |
| Angle Bracket | P 600.00 |

| | |
|-------------------|------------|
| Estimated charges | P 1,800.00 |
|-------------------|------------|

| | |
|---------------|----------------|
| STUDIO | Area ≈ 13 sq.m |
|---------------|----------------|

ACU6 1.5hp Windowtype Inverter KA-150MCARINV32

| | |
|----------------|------------|
| Initial charge | P 1,200.00 |
| Angle Bracket | P 600.00 |

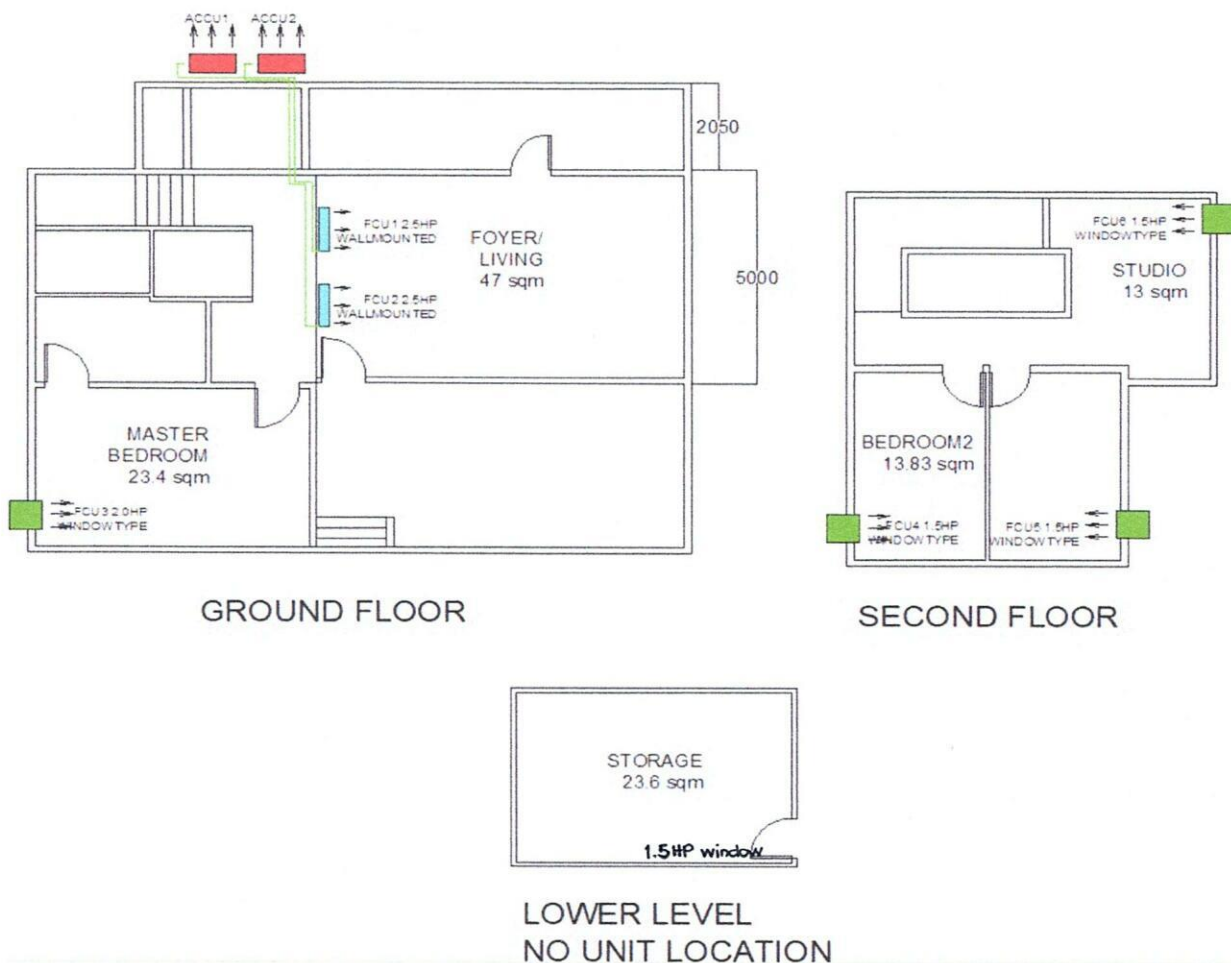
| | |
|-------------------|------------|
| Estimated charges | P 1,800.00 |
|-------------------|------------|

| | |
|----------------------------|------------------|
| STORAGE LOWER LEVEL | Area ≈ 22.6 sq.m |
|----------------------------|------------------|

ACU7 1.5hp Windowtype Inverter KA-150MCARINV32

| | |
|----------------|------------|
| Initial charge | P 1,200.00 |
| Angle Bracket | P 600.00 |

| | |
|-------------------|------------|
| Estimated charges | P 1,800.00 |
|-------------------|------------|



Total Estimated Charges

P 66,920.00

Validity: This quotation is valid for a period of fifteen (15) days from the date thereof, subject to our confirmation thereafter.

Note:

- 1 Location of indoor and outdoor units base in floor plan.
- 2 AC drain line will be tapped to the nearest drain provision provided by the customer's contractor.
- 3 Need for site visit before installation and for final location of units.
- 4 Customer need to cover the side of windowtype if unit is smaller than existing hole.
- 5 KA-150MCARINV32 Dimension: W x D x H, = 450.6 X 675 x 350 mm. (17.7 x 26.6 x 13.8 inches)
- 6 KA-200MCARINV32 Dimension: W x D x H, = 660 X 780 x 428 mm. (26 x 30.7 x 16.8 inches)
- 7 Working days: Monday to Saturday, 8am- 5pm with parking. Need working permit.
- 8 Mechanical Plans, Permits, Electrical permits not included.
- 9 Deflectors, masonry, carpentry, chipping & plastering (finishing & restoration) are not included in the installation.
- 10 Electrical power supply (feeder line) **220v/ 60hz/ 1ph**, is not included in the scope of work of Kolin.
- 11 **Final charges will be based on actual installation.**

Prepared by:

Jeffrey Dadios

Field Surveyor

Customer Conformer:

Signature Over Printed Name

Reviewed by:

Engr. Kenneth Zamora

Service Supervisor

Field and Shop Operation