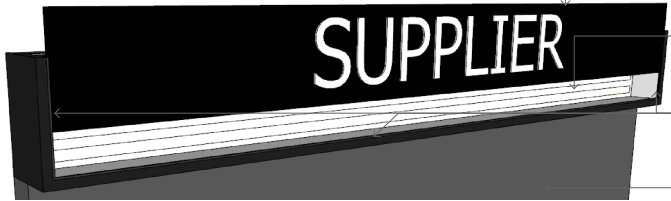
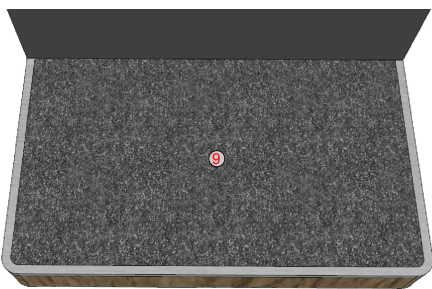
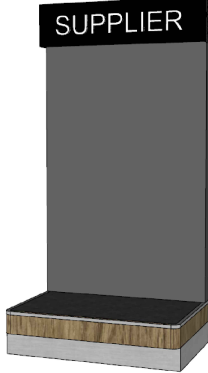
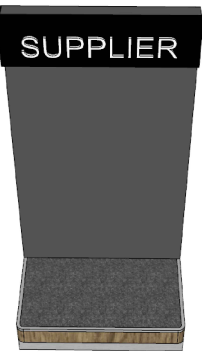
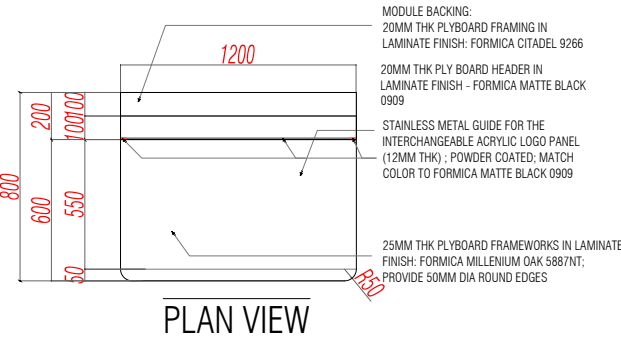


ALL WOOD MATERIALS MUST BE TREATED WITH FIRE RETARDANT AND PEST PROTECTION
PROVIDE CERTIFICATION FOR BOTH OFF-SITE/ON-SITE WORKS



MODULE HEADER PERSPECTIVE 1

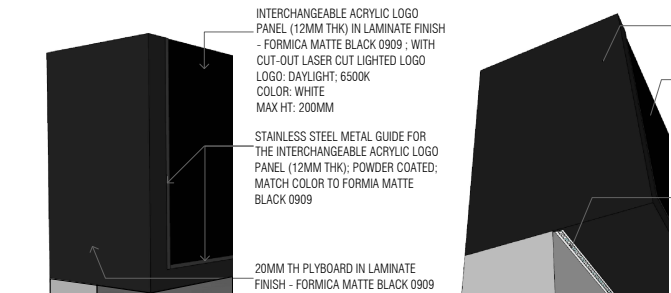
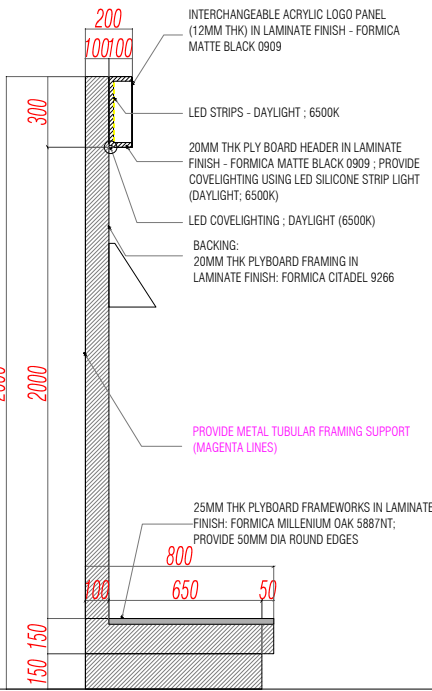
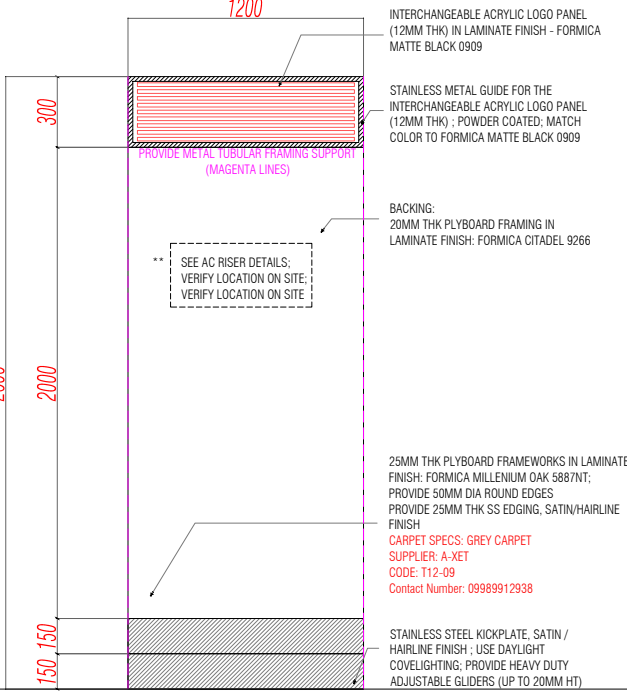
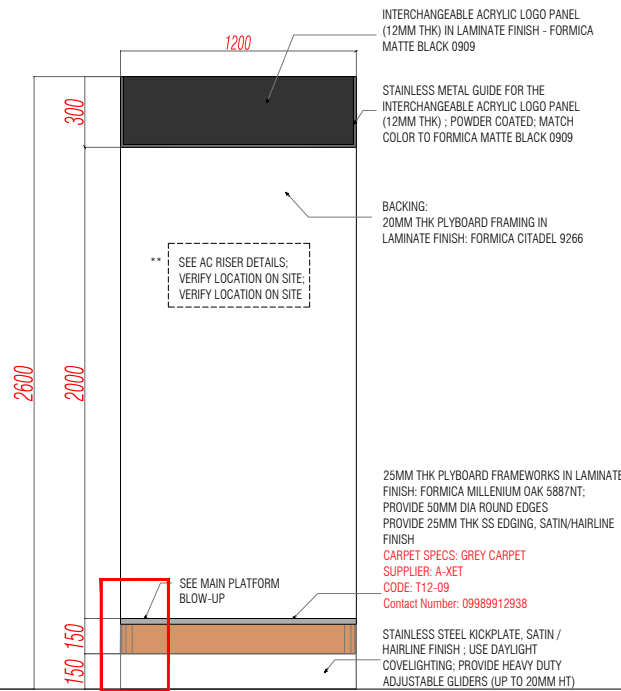
INTERCHANGEABLE ACRYLIC LOGO PANEL (12MM THK) IN LAMINATE FINISH - FORMICA MATTE BLACK 0909

LOGO C/O OTHERS

LED BACKLIGHTING DAYLIGHT; 6500K LOGO: WHITE

STAINLESS STEEL METAL GUIDE FOR THE INTERCHANGEABLE ACRYLIC LOGO PANEL (12MM THK); POWDER COATED; MATCH COLOR TO FORMICA MATTE BLACK 0909

20MM THK PLYBOARD BACKING IN LAMINATE FINISH: FORMICA CITADEL 9266



MODULE HEADER PERSPECTIVE 2

INTERCHANGEABLE ACRYLIC LOGO PANEL (12MM THK) IN LAMINATE FINISH - FORMICA MATTE BLACK 0909 ; WITH CUT-OUT LASER CUT LIGHTED LOGO; DAYLIGHT; 6500K COLOR: WHITE MAX HT: 200MM

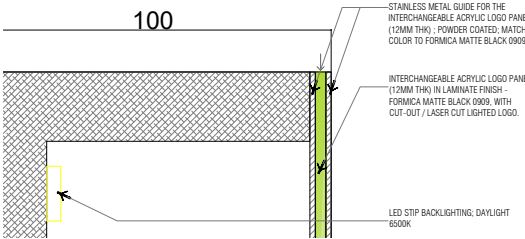
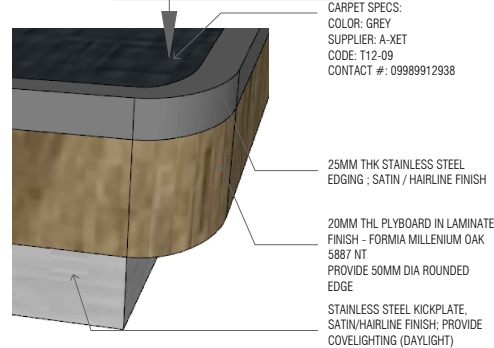
STAINLESS STEEL METAL GUIDE FOR THE INTERCHANGEABLE ACRYLIC LOGO PANEL (12MM THK); POWDER COATED; MATCH COLOR TO FORMICA MATTE BLACK 0909

20MM TH PLYBOARD IN LAMINATE FINISH - FORMICA MATTE BLACK 0909

20MM TH PLYBOARD IN LAMINATE FINISH - FORMICA MATTE BLACK 0909

INTERCHANGEABLE ACRYLIC LOGO PANEL (12MM THK) IN LAMINATE FINISH - FORMICA MATTE BLACK 0909 ; WITH CUT-OUT LASER CUT LIGHTED LOGO; DAYLIGHT; 6500K COLOR: WHITE MAX HT: 200MM

LED COVELIGHTING (CONCEALED) COLOR: WHITE TEMPERATURE: 6500K ; DAYLIGHT



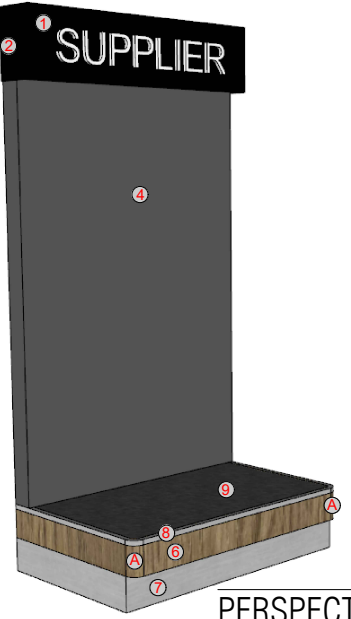
LED SILICONE STRIP SAMPLE



DOUBLE SLOTTED POST REFERENCE PHOTO

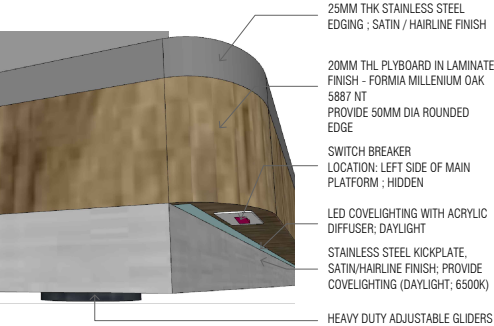


PANASONIC DUPLEX OUTLET ; GROUND TYPE; GREY



PERSPECTIVE

NOTE: PHOTO SHOWN IS FOR GRAPHIC REPRESENTATION ONLY. FOLLOW GIVEN DIMENSIONS ON THE ABOVE DRAWINGS



MAIN PLATFORM BLOW-UP



MALE/FEMALE FOLDABLE PLUG REFERENCE PHOTO



L	E	G	E	N	D
1	INTERCHANGEABLE ACRYLIC LOGO PANEL (12MM THK)				
2	HEADER - FORMICA 0909 MATTE BLACK				
3	DOUBLE SLOTTED POST - POWDER COATED FINISH (MATTE) ; MATCH TO FORMICA CITADEL 9266; 4 UNITS				
4	BACKING - FORMICA CITADEL 9266				
5	ADJUSTABLE / DETACHABLE SHELving - FORMICA MILLENIUM OAK 5887NT				
6	MAIN PLATFORM - FORMICA MILLENIUM OAK 5887NT				
7	STAINLESS STEEL KICKPLATE, SATIN / HAIRLINE FINISH ; USE DAYLIGHT COVELIGHTING ; PROVIDE HEAVY DUTY ADJUSTABLE GLIDERS; UP TO 20MM HT				
8	25MM THK STAINLESS STEEL EDGING; HAIRLINE/SATIN				
9	CARPET SPECS: GREY CARPET; SUPPLIER: A-XET CODE: T12-09; ntact Number: 09989912938				
A	50MM DIA ROUNDED EDGES				

ADDITIONAL NOTES:

LED BACKLIGHTING (HEADER) - LED STRIP LIGHT

COVELIGHTING - LED SILICONE STRIP LIGHT

PROVIDE INDEPENDENT CIRCUIT BREAKER; 20 AMP CAPACITY

ALL WOOD MATERIALS MUST BE TREATED WITH FIRE RETARDANT AND PEST PROTECTION

PROVIDE CERTIFICATION FOR BOTH OFF-SITE/ON-SITE WORKS